



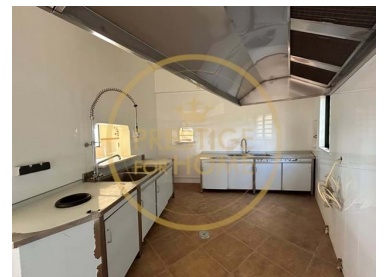
1149-39

Reference

Scan the QR code to view the property



Loulé (São Sebastião) - Commercial property



3

Bathrooms



567

Area (m²)



866

Land Area (m²)



Garage

550 000 €

(EUR €)

Urban building for sale intended for industry, catering, events, in Loulé.

Exceptional Opportunity: Commercial Space in Perfect Condition, Ideal for Dining and Festive Events

Are you looking for the ideal location to develop your catering, restaurant, or event space rental business? Look no further! We have the perfect solution for you, just 5 minutes from Loulé. Come discover this growth opportunity!

We are proud to present to you this commercial space in perfect condition. Located 5 minutes from Loulé, this space is ideally suited for a variety of food and event-focused businesses. Whether it's for wedding celebrations, baptisms, birthdays, or any other special occasion, this venue is ready to accommodate all your projects.

**Marisa Gonçalves**968862654 ²

marisagoncalves@prestigeforhome.pt

T +351 289 410 040 ¹ · T +351 961 706 562 ² · E info@prestigeforhome.pt**Praça da República n.º 72 R/C Esq. 8100-269 Loulé****AMI 8436**¹ (Call to national fixed network) | ² (Call to national mobile network)



1149-39

Reference

Scan the QR code to view the property



Key Features:

Pristine Condition: You won't need to invest in costly renovations. This space is ready to embrace your vision without any effort.

Spacious Dining Area: A large dining area awaits you, offering plenty of space to accommodate a large number of guests. The smart layout allows for flexibility for different types of events.

Semi-Open Industrial Kitchen: The kitchen is the heart of any dining business. This semi-open industrial kitchen is equipped with everything you need to efficiently prepare delicious dishes.

Staff Space: You also have a dedicated staff room, ensuring smooth organization for your team.

Comfort Ensured: Multiple restrooms are available for your customers, ensuring a pleasant experience for all.

Versatile Basement: The spacious basement offers a unique opportunity. You'll find a bar for hosting private parties or for different uses according to your needs, providing endless possibilities.

Convenient Access and Abundant Parking: Benefit from well-connected access, ensuring optimal visibility for your business. Additionally, your customers will appreciate the numerous parking spaces available, making their experience even more enjoyable.

Endless Possibilities: This commercial space offers a range of opportunities for ambitious entrepreneurs. Whether you want to create a restaurant, catering service, or an event space rental business, this space is the perfect blank canvas to bring your vision to life.

Don't miss this exceptional opportunity to acquire a turnkey commercial space, ready to fulfill your dreams of dining and events in a space that combines functionality and convenience. Contact us today to schedule a visit and discover for yourself the full potential of this unique space. Your success starts here.



Marisa Gonçalves

968862654 ²

marisagoncalves@prestigeforhome.pt

T +351 289 410 040 ¹ · T +351 961 706 562 ² · E info@prestigeforhome.pt

**Praça da República n.º 72 R/C Esq. 8100-269 Loulé
AMI 8436**

¹ (Call to national fixed network) | ² (Call to national mobile network)



1149-39

Reference

Scan the QR code to view the property



Property Features

- Walk-in wardrobe
- Floors: 0
- Basement
- Views: Countryside views
- Parking space
- Accessibility\proximity: Bus station, Airport 30m, Beach at 30 min, Golf course 5km, City nearby, Touristic areas
- Mains water
- Garage
- Built year: 1999
- Drive way
- Storage / utility room
- Main drainage
- Sealed land area
- Energetic certification: B-
- Renovation year: 2022



Marisa Gonçalves

968862654 ²

marisagoncalves@prestigeforhome.pt

T +351 289 410 040 ¹ · T +351 961 706 562 ² · E info@prestigeforhome.pt

**Praça da República n.º 72 R/C Esq. 8100-269 Loulé
AMI 8436**

¹ (Call to national fixed network) | ² (Call to national mobile network)